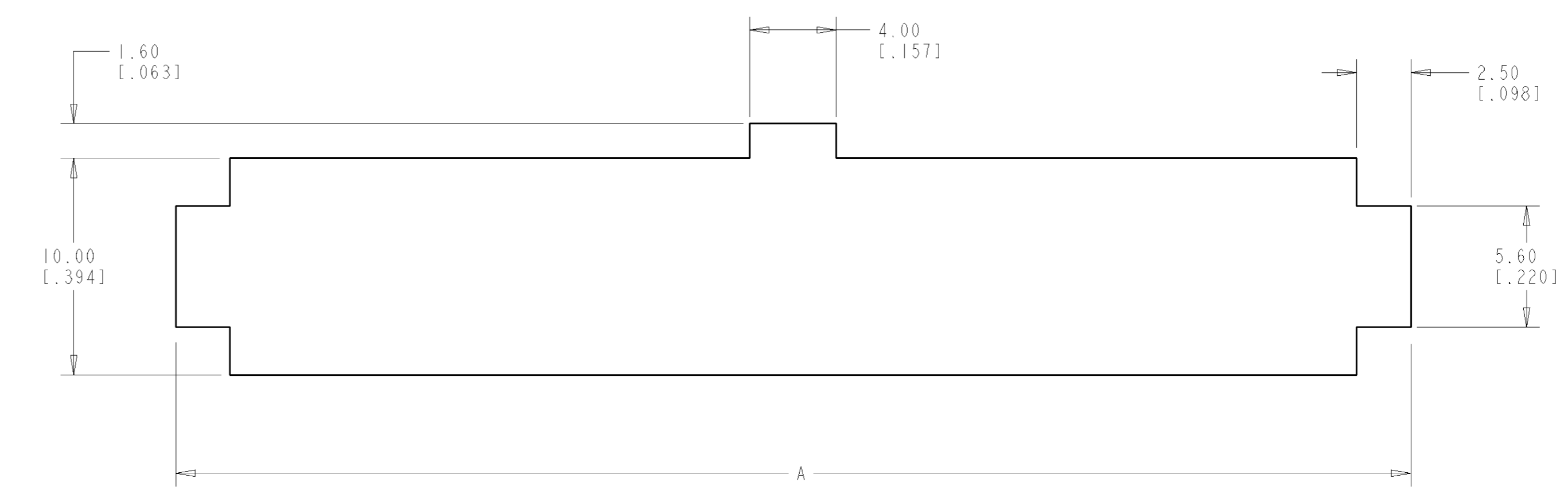
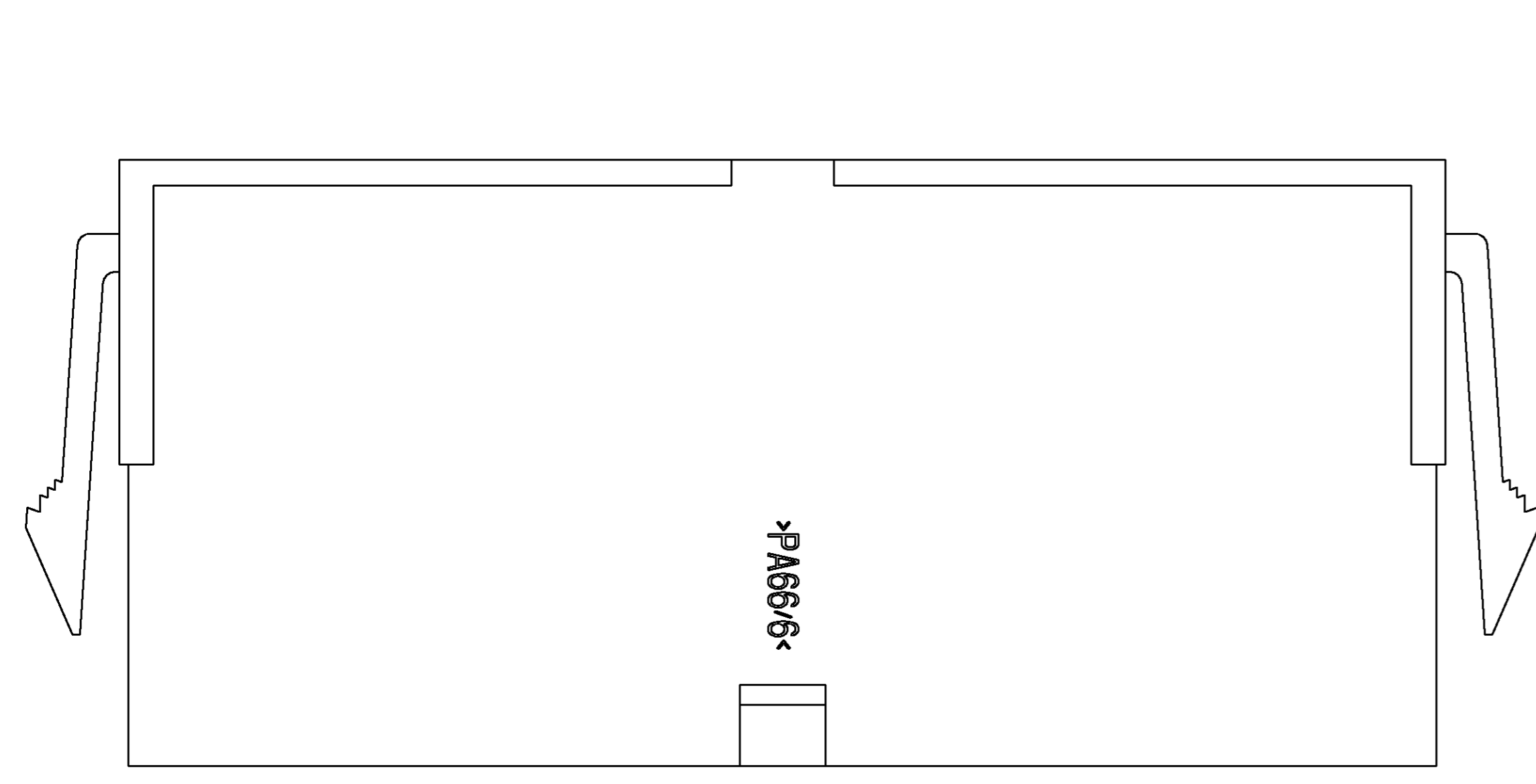
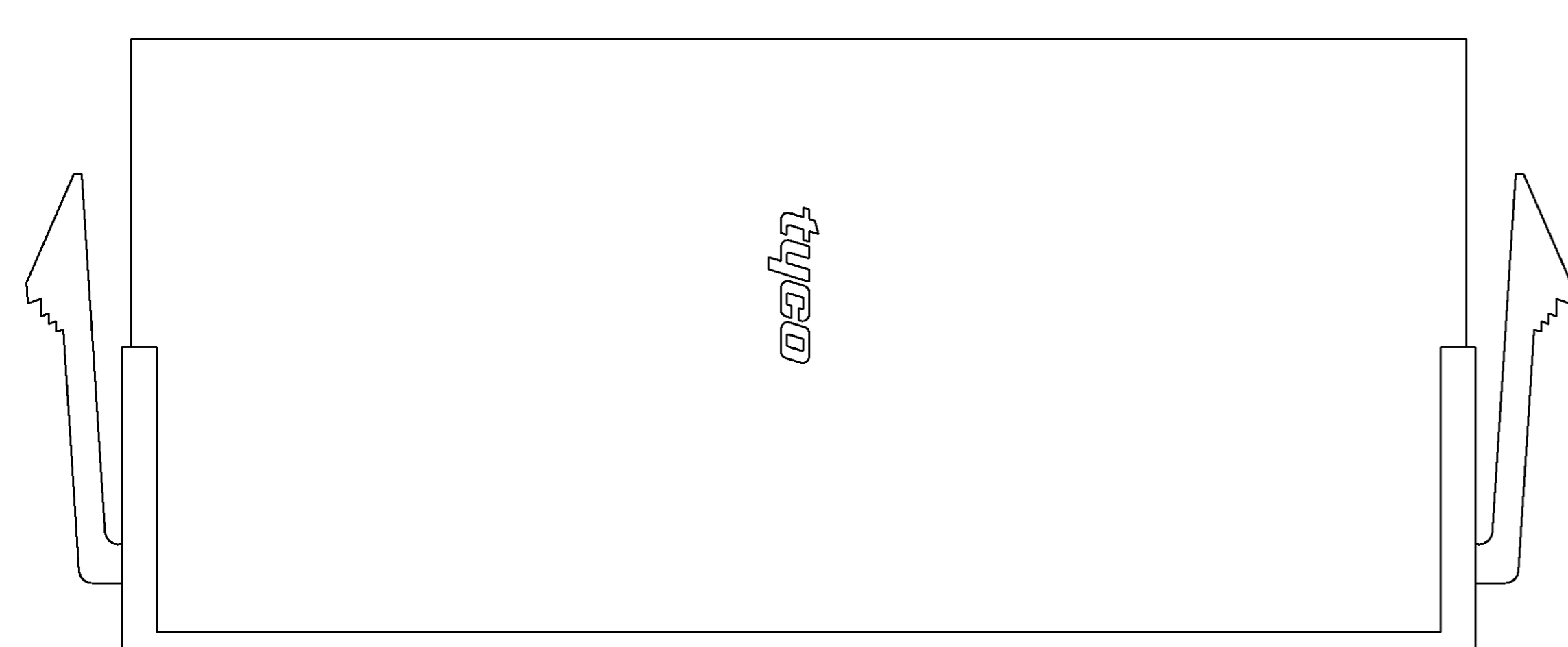
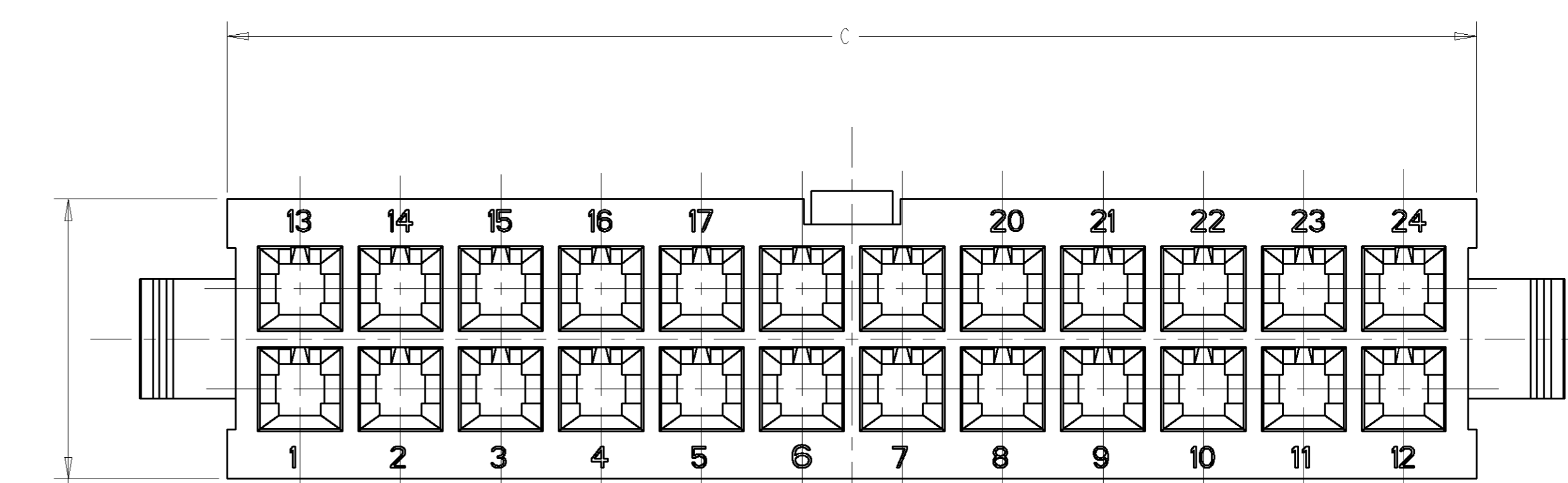
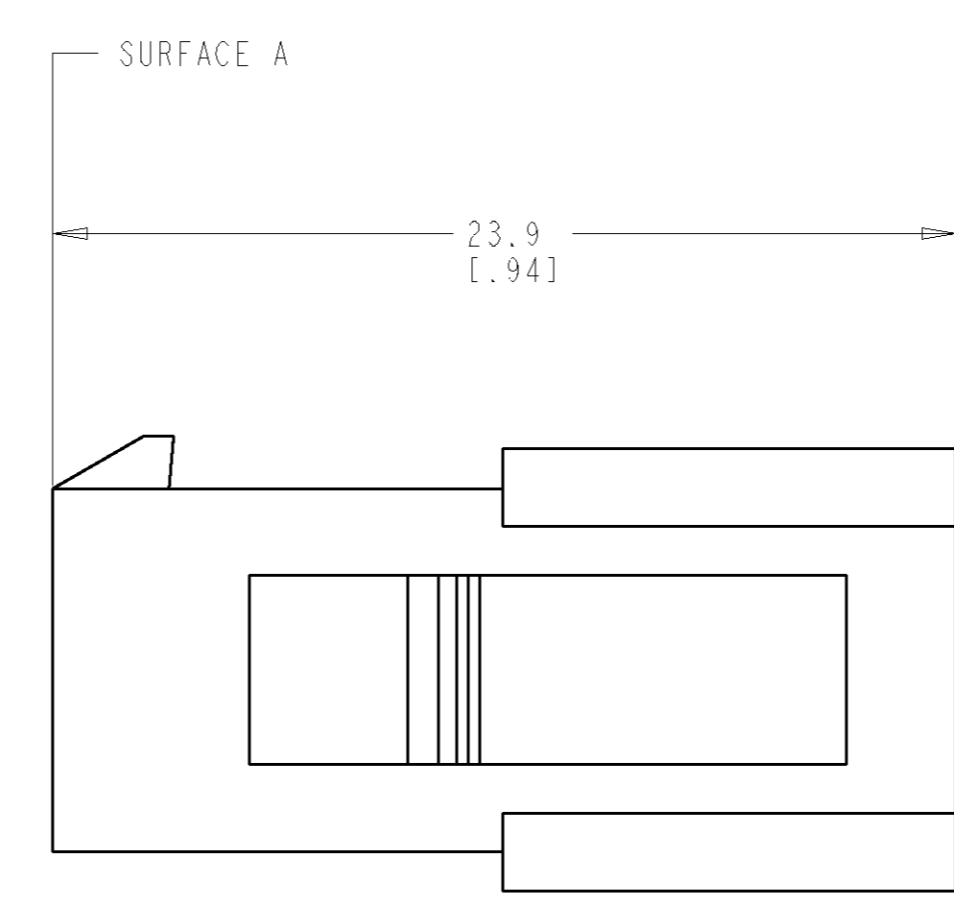
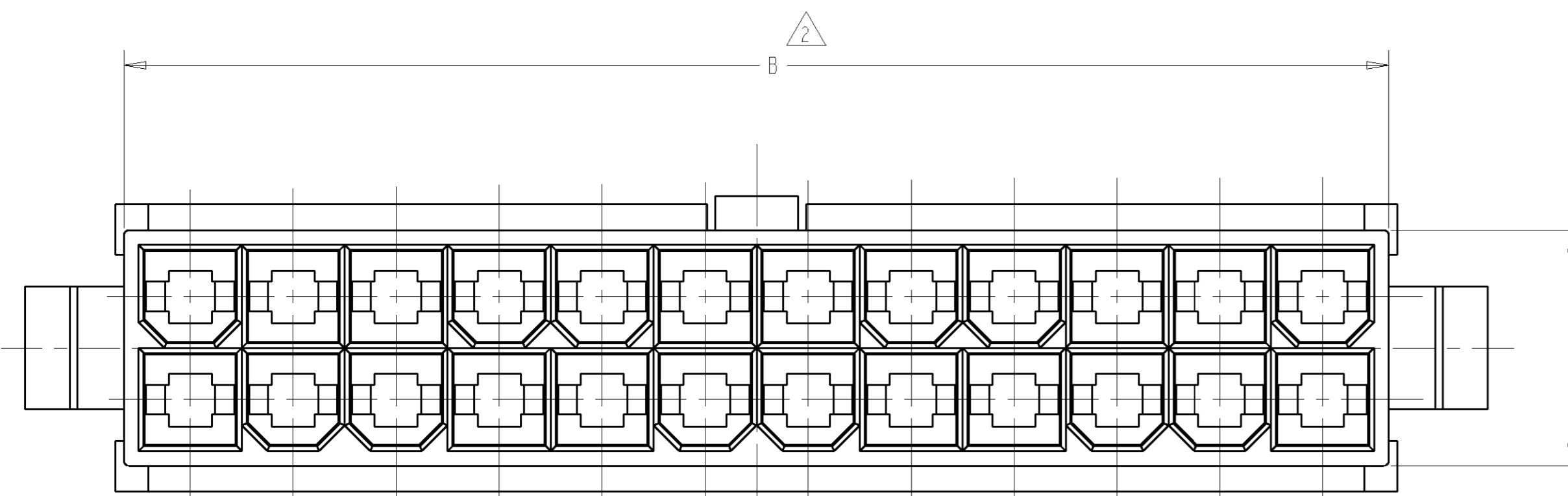


LOC	DIST	REVISIONS					
CM	00	P.	LTR	DESCRIPTION	DATE	DWN	APVD
		B		REVISED PER 0638-0761-04	11-OCT-04	SH	DC



RECOMMENDED CUT OUT  
 FOR 2.00[.079] MAX. THICK PANEL



△ NYLON, UL94V-0, NATURAL (WHITE).

△ DIMENSION TO BE CHECKED AT SURFACE A.

- DIMENSIONS IN BRACKETS ARE IN INCHES.
- MALE CONTACTS MUST BE INSERTED SO THAT THE TOP OF THE WIRE AND INSULATION CRIMPS ARE FACING THE SIDE OF THE HOUSING WITH THE LOCKING LATCH.
- RECOMMENDED MAX. PANEL THICKNESS 2.00[.079].
- PANEL MUST BE PUNCHED SO THAT THE HOUSING ENTERS THE PANEL IN THE SAME DIRECTION AS THE PUNCH.

C	B	A	NO. OF POSITIONS	PART NUMBER
52.3[2.059]	51.6[2.032]	57.00[2.244]	24	2-794598-4
48.1[1.894]	47.4[1.866]	52.80[2.079]	22	2-794598-2
43.9[1.728]	43.2[1.701]	48.60[1.913]	20	2-794598-0
39.7[1.563]	39[1.535]	44.40[1.748]	18	1-794598-8
35.5[1.398]	34.8[1.370]	40.20[1.583]	16	1-794598-6
31.3[1.232]	30.6[1.205]	36.00[1.417]	14	1-794598-4
27.1[1.067]	26.4[1.039]	31.80[1.252]	12	1-794598-2
22.9[0.902]	22.2[0.874]	27.60[1.087]	10	1-794598-0
18.7[0.736]	18[0.709]	23.40[0.921]	8	794598-8
14.5[0.571]	13.8[0.543]	19.20[0.756]	6	794598-6
10.3[0.406]	9.6[0.378]	15.00[0.591]	4	794598-4
6.1[0.240]	5.4[0.213]	10.80[0.425]	2	794598-2

DIMENSIONS: mm [INCHES]		TOLERANCES UNLESS OTHERWISE SPECIFIED:		DWN S. HOOVER 11-OCT-2004 ENR D. COLEY 11-OCT-2004 APVD D. COLEY 11-OCT-2004		<b>tyco</b> AMP Incorporated Harrisburg, PA 17105-3608	
0 PLC ± 1 PLC ±0.2 [0.01] 2 PLC ± 3 PLC ± 4 PLC ± ANGLES ±		40°±0°		PRODUCT SPEC APPLICATION SPEC WEIGHT CUSTOMER DRAWING		NAME PLUG, PANEL MOUNT, 2 TO 24 POSITION, AMP-DUACT™ POWER CONNECTOR	
MATERIAL: △		FINISH:		SIZE: A1 CASE CODE: 00779 DRAWING NO: C-794598		RESTRICTED TO SCALE: 4:1 SHEET 1 OF 1 REV B	

